

DRAKO

Ground control station



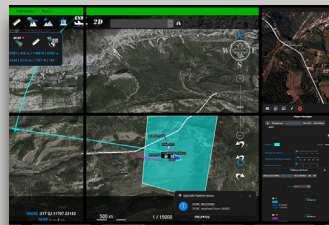
SICS



ATLAS



DELTA SUITE



ATAK



The screenshot displays the DRAKO Ground Control Station interface, divided into several functional areas:

- AIRCRAFT STATUS:** Located at the top left, it shows battery levels (39.3 V, 20.1 A), flight time (16 min), and distance (546 m).
- LIVE WIND STATUS:** A circular gauge on the left indicates a wind speed of 1.8 m/s.
- FLIGHT CONTROL:** The bottom left section contains mission controls like GOTO, HOME, RACETRACK, MISSION, HOLD, and LAND. It also displays 'Current mode: RACETRACK' and 'AIR SPEED' (16.0 m/s and 16.3 m/s).
- DISPLAY OPTIONS AND MEASUREMENTS:** A vertical toolbar on the right side of the map provides various display and measurement tools.
- PHOTO AND VIDEO CONTROL AND VISUALIZATION:** The right side of the interface features a video feed of the drone's camera view, with controls for 'SAFETY CAMERA', 'EO', 'IR', and 'FRONT VIEW'. It also shows coordinates (Lon: 1.765843, Lat: 43.458370, Alt: AMSL: 392m) and distance (2800m).

PLAN

- Define the drone's route safely, including the geocaging and the ground level
- Download the map to operate offline
- Establish the flight characteristics



SIMULATE

- Analyze flight feasibility
- Simulate vision via the payload
- Study the potential risks
- Maintain operator skills



OPERATE

- Monitor flight progress
- Follow flight status live
- Adapt drone behavior to mission requirements
- Payload management and control

