



**Precise aerial data, when you want.**

CAPTURE AERIAL PHOTOS AND TURN THEM  
INTO MAPS FOR GEO INTELLIGENCE



**1.7**

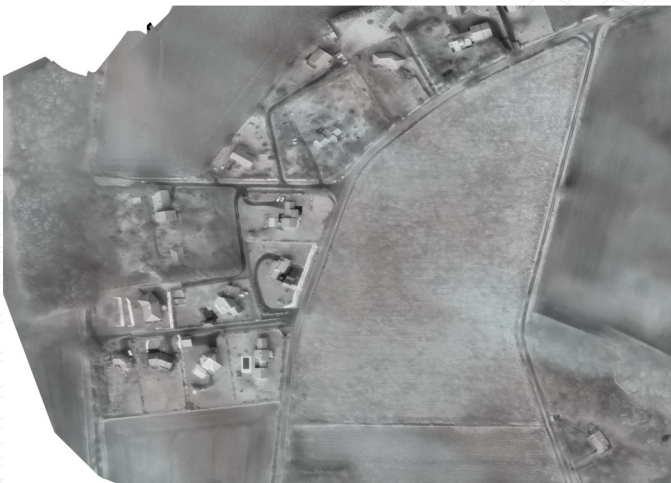
cm GSD at 122m  
(400ft) altitude

**59**

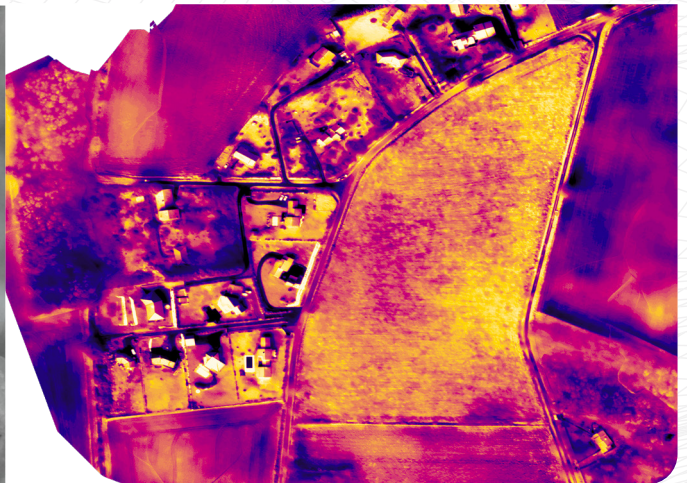
minute  
endurance

**UX11IR**

LIGHTWEIGHT AND HAND-LAUNCHED UAV FOR  
REAL TIME IMAGE INTELLIGENCE AT DAY AND NIGHT



Raw result



Colored result

# Key Differentiators

**Map large areas faster** - One pilot can map 9,6 km<sup>2</sup> (3,7mi<sup>2</sup>) in an 8-hour day at 122 m flight height.

**Leverage versatile connectivity** - Dual-communication systems including WiFi radio link and mobile connectivity via 3G network (4G-ready) for unlimited range. Control your drone remotely from anywhere through the cloud.

**Safe by design** - Fully redundant flight systems, no fly zones and lightweight material means safety is never a concern.

**Easy to deploy** - Nearly every part of the process is automated, from mission planning to a deep-stall, low speed landing.

**Delair Flight Deck** - easy-to-use Android<sup>TM</sup> mission planning and monitoring app - pre-flight checklist, no-fly zones, modern user interface.

**AI-ready with onboard edge processing** - Start analyzing your imagery while the drone is still in the air.

**Field proven** - Our drones have already been deployed on theatres of operation.

**Discreet and safe** - Radio communications use encrypted data

## UAV specifications

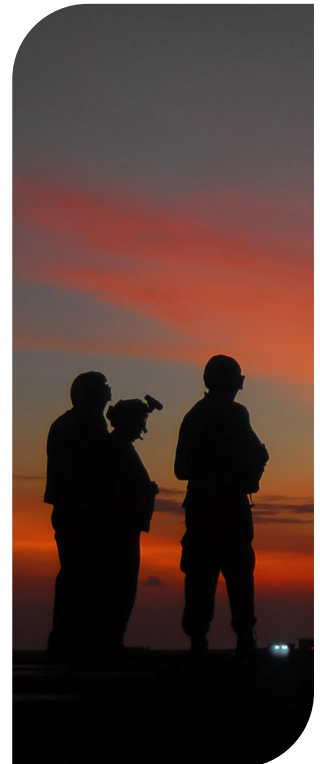
Endurance <sup>1,2</sup>	Up to 59 minutes
Weight (payload included)	1.5 kg (3.3 lbs)
Wingspan	1.1 m (43 in)
Deployment time <sup>1</sup>	5 min
Cruise speed <sup>1,2</sup>	54 km/h (34 mph)
Take-off / Landing	Hand-launched (angle: 30 degrees) / Belly landing (angle: 30 degrees)
Flying range <sup>1</sup>	53 km (33 mi)
Surface area covered <sup>1</sup>	Nominal (60% side overlap): 1.2 km <sup>2</sup> (300 ac) at 122 m (400 ft) AGL Maximum (60% side overlap): 6,5 km <sup>2</sup> (1600 ac) at 1,000m (3,280 ft) AGL

### COMMUNICATION RANGE

3G/4G	Unlimited (within network coverage)
Delair Link (2.4 GHz radio) <sup>1,3</sup>	5 km in FCC configuration (and up to 10 km), 3 km in CE configuration (and up to 5 km).

### OPERATING CONDITIONS

Weather	45 km/h (28 mph) wind resistance, light rain
Maximum altitude (MSL) <sup>1</sup>	Takeoff at 5,000 m (16,400 ft) Flight at 6,000 m (19,700 ft)
Landing accuracy <sup>1</sup>	5 m (16 ft)
Temperature <sup>1</sup>	-20 to 45 C (-4 to 110 F)



## Sensors

### INDUSTRIAL-GRADE RGB CAMERA SENSOR

Sensor type	Global shutter, distortion free
Image resolution	21.4 Mpix
Dynamic range	70 dB
HFOV / VFOV	38° / 32°
GSD	1.7 cm at 122 m (400 ft) AGL 3.9 cm at 1,000m (3,280 ft) AGL

In-flight sensor configuration

In-flight picture transmission

High quality raw output

### IR CAMERA SENSOR

Captor	FLIR Boson
Image resolution	640x512
Focal	8.7mm
Spectral range	LWIR, 7.5 µm – 13.5 µm
GSD	16.8 cm at 122 m (400 ft) AGL 39 cm at 1,000m (3,280 ft) AGL
	Auto or manual (brightness)
	Real-time histogram plot and photo Review with quality indicators

## Transport Case

Lightweight rugged backpack, airplane checkable

14kg with all accessories, 79x43x35 cm (31x17x14 in)

- 1 Actual results may vary depending on UAV configuration, battery age and condition, and operational, environmental and climate conditions.
- 2 Varies depending on altitude.
- 3 In good line of sight conditions with no signal interference.

Specifications subject to change without notice to improve reliability, function or design or otherwise.

© 2021, Delair SAS. All rights reserved. Delair is a trademark of Delair SAS, registered in France. All other trademarks are the property of their respective owners.