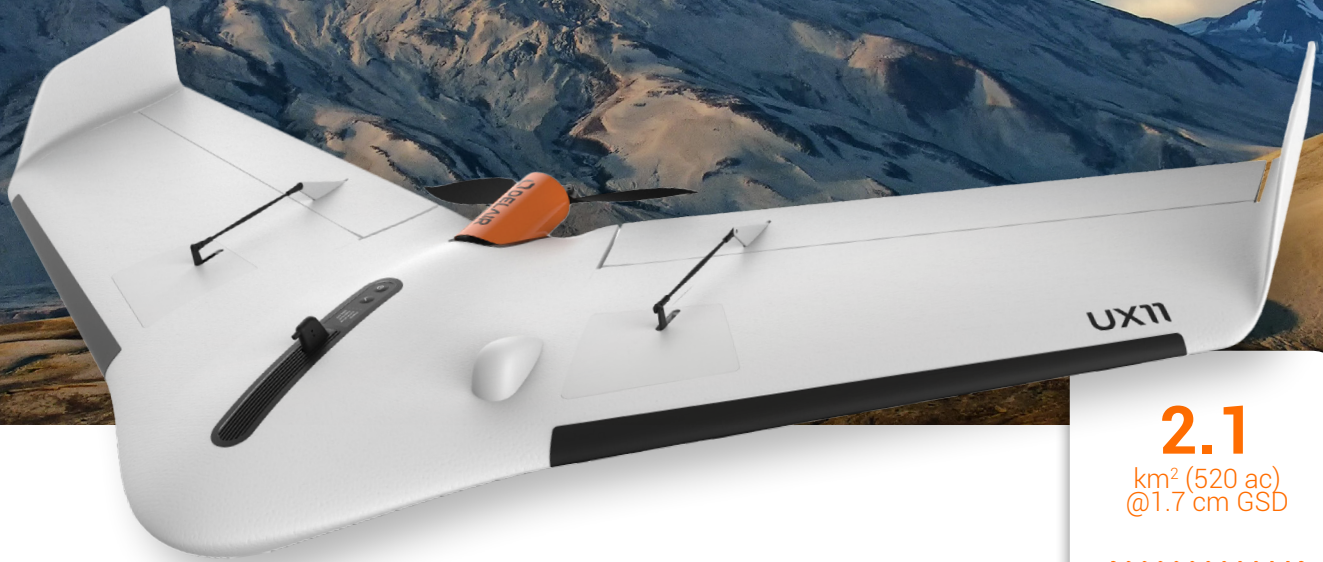


STABLE & EASY-TO-USE

Large-area mapping with centimeter-level precision and optional PPK for survey-grade results



2.1
km² (520 ac)
@1.7 cm GSD

3G/4G
Connectivity

1
GSD down
to 1 cm

59
Min
Endurance

Professional line

UX11

PROFESSIONAL SMALL UAV,
SURVEY AND MAP WITHEASE

INDUSTRIES



Geospatial



Mines and
Quarries



Agriculture
& Forestry



Emergency

KEY APPLICATIONS

Mapping & GIS

Surveying

Construction

Environmental and Conservation

Surface Mining

Aggregates

Public Land Management

Landfill Management

KEY DIFFERENTIATORS

Map large areas faster - cover 2,1 km² (520 acres) with 1.7 cm GSD at 122 m flight height. Industrial camera with optional PPK activation for survey-grade results down to 1 cm precision.

BVLOS-ready communications - mobile connectivity via 3G network (4G-ready) for unlimited range or optional radio link.

Precise takeoffs and landings - high-angle (30 degrees) takeoffs and landings for use in confined areas, low-speed landing using distance-measurement technology.

Easy-to-use Android™ mission planning and monitoring app - pre-flight checklist, no-fly zones, modern user interface, in-flight data review.

UAV SPECIFICATIONS

Endurance ¹	Up to 59 min
Weight (payload included)	1.4 kg (3.1 lbs)
Wingspan	1.1 m (43 in)
Deployment time ¹	5 min
Cruise speed	54 km/h (34 mph)
Take-off / Landing	Hand-launched (angle: 30 degrees) / Belly landing (angle: 30 degrees)
Flying range ¹	60 km (37 mi)
Maximum surface area covered ¹	
	1.0 km ² (250 ac) mapped with 1 cm GSD at 75 m (246 ft) AGL
	2.1 km ² (520 ac) mapped with 1.7 cm GSD at 122 m (400 ft) AGL
	8.4 km ² (2,075 ac) mapped with 7 cm GSD at 500 m (1,640 ft) AGL

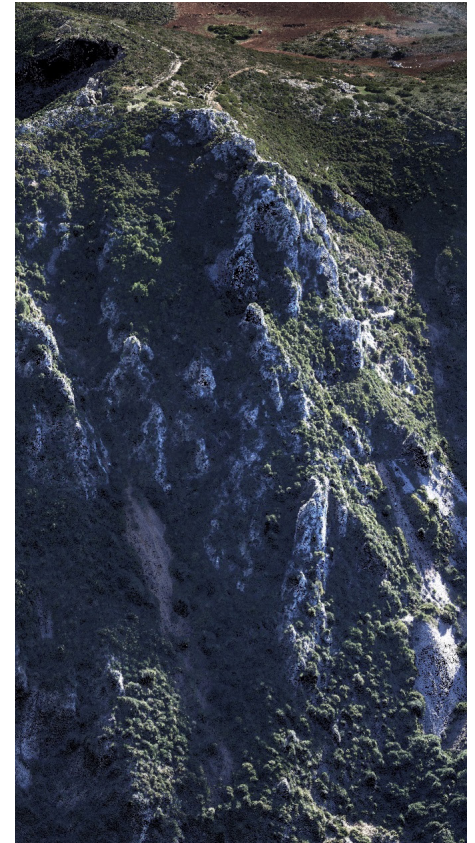
Communication range

3G/4G	Unlimited (within network coverage)
Optional radio link ¹	3 km (1.9 mi)

Operating conditions

Weather	45 km/h (28 mph) wind resistance, moderate rain
Maximum takeoff altitude ¹	4,000 m (13,100 ft)
Landing accuracy ¹	5 m (16 ft)

GNSS..... PPK optional (software activated), L1/L2, GPS+GLONASS+SBAS



SENSOR

Industrial-grade RGB camera sensor built-in

Sensor type	Global shutter, distortion free
Image resolution	21.4 Mpix
Dynamic range	70 dB
HFOV / VFOV	38° / 32°
In-flight sensor configuration	Auto or manual (shutter, gain, brightness)
In-flight picture transmission and QAQC	Real-time histogram plot and photo review
High quality raw output	

DELIVERABLES

RAW DATA COMPATIBLE WITH ALL PHOTOGRAMMETRY SOFTWARES.

ANALYTICS

Ortho Image & DSM (Digital Surface Model), Contour Lines, Cross Sections, Elevation Profiles, Stockpile Volume Calculation, Vegetation Encroachment, Anomaly Detection, and many more.

ANALYTICS COMPATIBLE WITH

ESRI ArcGIS, QGIS, Surpac, GlobalMapper, AutoCAD, PLS-CADD and many more.

¹ Actual results may vary depending on UAV configuration, battery age and condition, and operational, environmental and climate conditions.

DELAIR AUTHORIZED DISTRIBUTION PARTNER